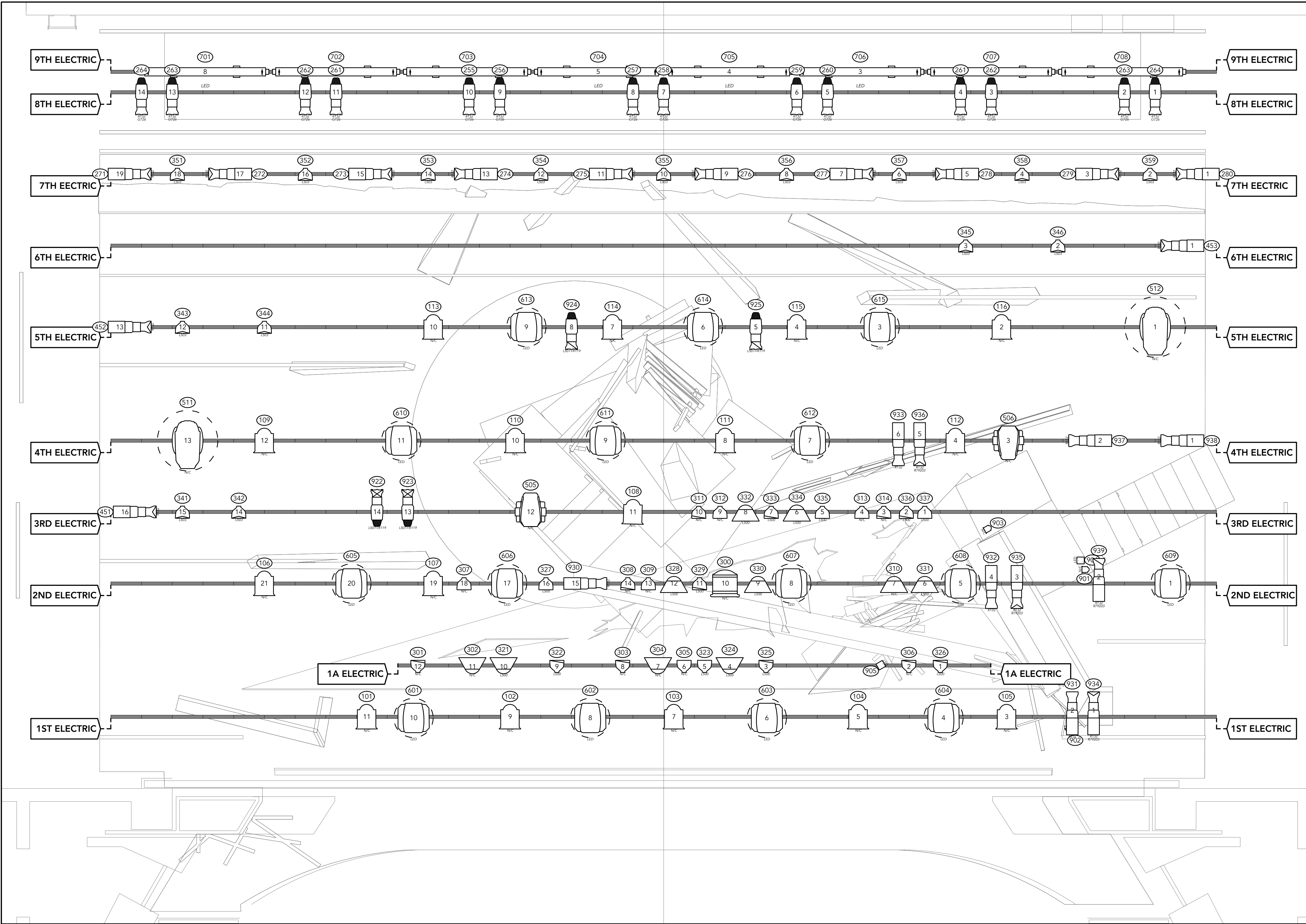


- 72 Bounce Drop
71 Back Black
70
69
68 9th (Cyc) Electric
67
66 8th Electric
65
64
63
62 White RP
61
60 Black Scrim
59
58 7th Electric
57
56
55 Tree Drop
54
53
52
51 6th Electric
50
49 OFF SR TAB
48 ON SR TAB
47
46 Hard Leg
45 Scenic Border
44 Border
43 5th Electric
42 Mid-Stage Traveler
41
40
39 2nd Hard Leg
38
37
36 Scenic Border
35 Border
34
33
32 4th Electric
31
30
29
28 Leg
27 Border
26 Ceiling stop
25 3rd Electric
24 ON SL TAB
23 OFF SL TAB
22 1st Hard Leg
21
20
19 2nd Electric
18
17
16
15
14
13 SL Leg
12
11 Electric 1A
10
9 Ceiling Start
8
7
6 1st Electric
5
4 Leg #1
3 FS Black
2 Main Drape
1 Hard Header



KEY

- ETC Source 4 - 5°

ETC Source 4 - 10°

ETC Source 4 - 14°

ETC Source 4 - 19°

ETC Source 4 - 26°

ETC Source 4 - 36°

ETC Source 4 - 50°

ETC ColorSource

ETC Lustr Series II
- ETC Source 4 Par MFL

Altman 14" Focusing Scoop

5K Fresnel

Rosco Miro Cube

Birdie

ETC Source 4 Par WFL

6" Fresnel

8" Fresnel

3" Fresnel
- High End Solo Frame 1000

High End Solo Frame 3000

Vari Lite VLX

Martin Mac III
- Color Kinetics ColorBlaze 72"
- Radiance Full Pump Hazer

Beam Bender

LEGEND

- 1

UNIT NUMBER
- 2

CHANNEL NUMBER

NOTES

- Please have extra R119 and R132 on hand for focus
- Set mounts are very subject to change based on blocking and set dressing

VERSION	DATE	NOTE
1	2.16.20	Final Plot
2	3/5/20	Updates
3	3/6/20	UPDATED CEILING

THIS DRAWING REPRESENTS VISUAL CONCEPTS AND CONSTRUCTION SUGGESTIONS ONLY. IT DOES NOT REPLACE THE KNOWLEDGE AND ADVICE OF A LICENSED STRUCTURAL ENGINEER. THE DESIGNER IS UNQUALIFIED TO DETERMINE THE STRUCTURAL APPROPRIATENESS OF THIS DESIGN AND WILL NOT ASSUME RESPONSIBILITY FOR IMPROPER ENGINEERING OR USE.

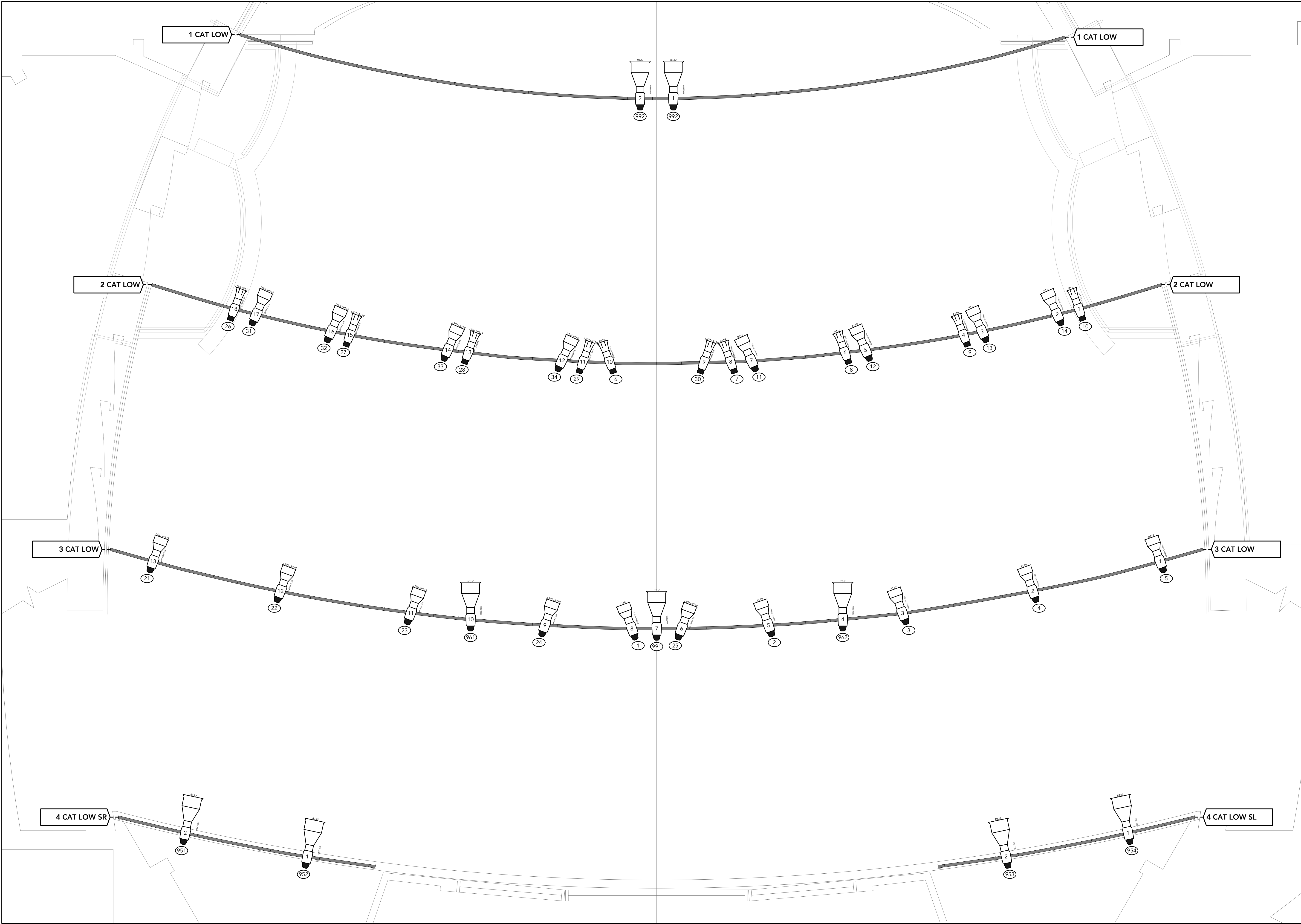
DIRECTED BY Amanda Consol
LIGHTING BY Lauren Gallup
PROJECTIONS BY N/A
SCENERY BY Grace Guarniere
SOUND BY N/A
ASST. LX DESIGNER Jacob Hughes
MASTER ELECTRICIAN Carrie Barton

Maryland Opera Studio
The Cunning Little Vixen
The Clarice Smith Performing Arts Center
Kay Theatre



LAUREN GALLUP
LIGHTING DESIGN
www.laurengallup.com
lga@lgaup@gmail.com
281-450-7092

DATE	VER.	SCALE	SHEET
3.6.20	3	3/8" = 1'	1
OVERHEAD PLOT			OF 6



KEY

PROFILES

- ETC Source 4 - 5"
- ETC Source 4 - 10"
- ETC Source 4 - 14"
- ETC Source 4 - 19"
- ETC Source 4 - 26"
- ETC Source 4 - 36"
- ETC Source 4 - 50"
- ETC ColorSource
- ETC Lustr Series II

WASH FIXTURES

- ETC Source 4 Par MFL
- Altman 14" Focusing Scoop
- 5K Fresnel
- Rosco Miro Cube
- Birdie
- ETC Source 4 Par WFL
- 6" Fresnel
- 8" Fresnel
- 3" Fresnel

MOVERS

- High End Solo Frame 1000
- High End Solo Frame 3000
- Vari Lite VLX
- Martin Mac III

STRIP LIGHTS

- Color Kinetics ColorBlaze 72"

ATMOSPHERE

- Radiance Full Pump Hazer

ACCESSORIES

- Beam Bender

LEGEND

1 UNIT NUMBER

2 CHANNEL NUMBER

NOTES

- Please have extra R119 and R132 on hand for focus
- Set mounts are very subject to change based on blocking and set dressing

VERSION	DATE	NOTE

THIS DRAWING REPRESENTS VISUAL CONCEPTS AND CONSTRUCTION SUGGESTIONS ONLY. IT DOES NOT REPLACE THE KNOWLEDGE AND ADVICE OF A LICENSED STRUCTURAL ENGINEER. THE DESIGNER IS UNQUALIFIED TO DETERMINE THE STRUCTURAL APPROPRIATENESS OF THIS DESIGN AND WILL NOT ASSUME RESPONSIBILITY FOR IMPROPER ENGINEERING OR USE.

DIRECTED BY Amanda Consol

LIGHTING BY Lauren Gallup

PROJECTIONS BY N/A

SCENERY BY Grace Guarniere

SOUND BY N/A

ASST. LX DESIGNER Jacob Hughes

MASTER ELECTRICIAN Carrie Barton

Maryland Opera Studio

The Cunning Little Vixen

The Clarice Smith Performing Arts Center

Kay Theatre



LAUREN GALLUP

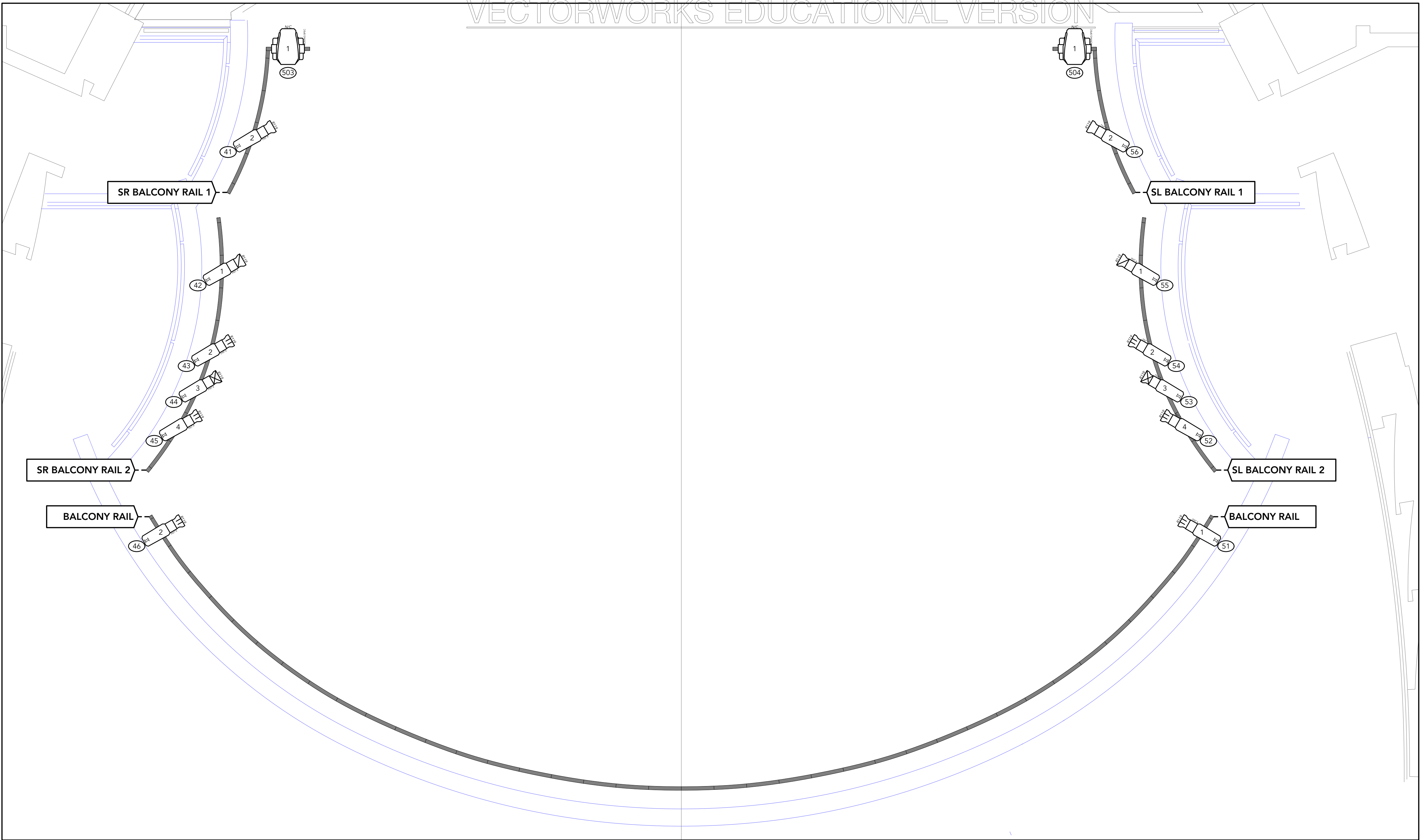
LIGHTING DESIGN

www.laurengallup.com

lrgallup@gmail.com

281-450-7092

DATE	VER.	SCALE	SHEET
3.6.20	3	3/8" = 1'	2
CATWALKS			OF 6



KEY

PROFILES

- ETC Source 4 - 5"
- ETC Source 4 - 10"
- ETC Source 4 - 14"
- ETC Source 4 - 19"
- ETC Source 4 - 26"
- ETC Source 4 - 36"
- ETC Source 4 - 50"
- ETC ColorSource
- ETC Lustr Series II

WASH FIXTURES

- ETC Source 4 Par MFL
- Altman 14" Focusing Scoop
- 5K Fresnel
- Rosco Miro Cube
- Birdie
- ETC Source 4 Par WFL
- 6" Fresnel
- 8" Fresnel
- 3" Fresnel

MOVERS

- High End Solo Frame 1000
- High End Solo Frame 3000
- Vari Lite VLX
- Martin Mac III

STRIP LIGHTS

- Color Kinetics ColorBlaze 72"

ATMOSPHERE

- Radiance Full Pump Hazer

ACCESSORIES

- Beam Bender

LEGEND

- UNIT NUMBER
- CHANNEL NUMBER

NOTES

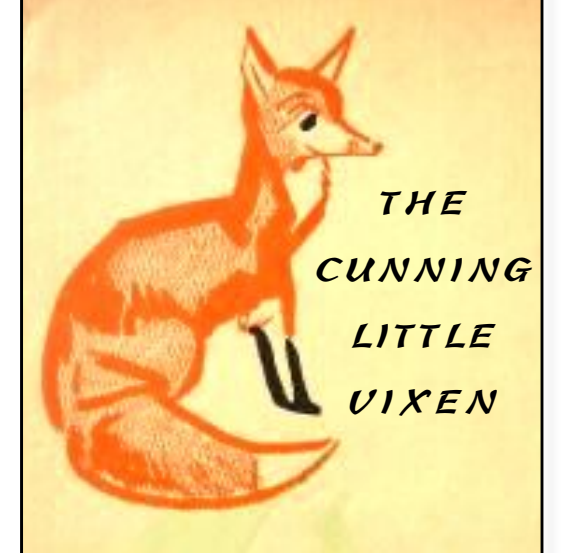
- Please have extra R119 and R132 on hand for focus
- Set mounts are very subject to change based on blocking and set dressing

VERSION	DATE	NOTE

THIS DRAWING REPRESENTS VISUAL CONCEPTS AND CONSTRUCTION SUGGESTIONS ONLY. IT DOES NOT REPLACE THE KNOWLEDGE AND ADVICE OF A LICENSED STRUCTURAL ENGINEER. THE DESIGNER IS UNQUALIFIED TO DETERMINE THE STRUCTURAL APPROPRIATENESS OF THIS DESIGN AND WILL NOT ASSUME RESPONSIBILITY FOR IMPROPER ENGINEERING OR USE.

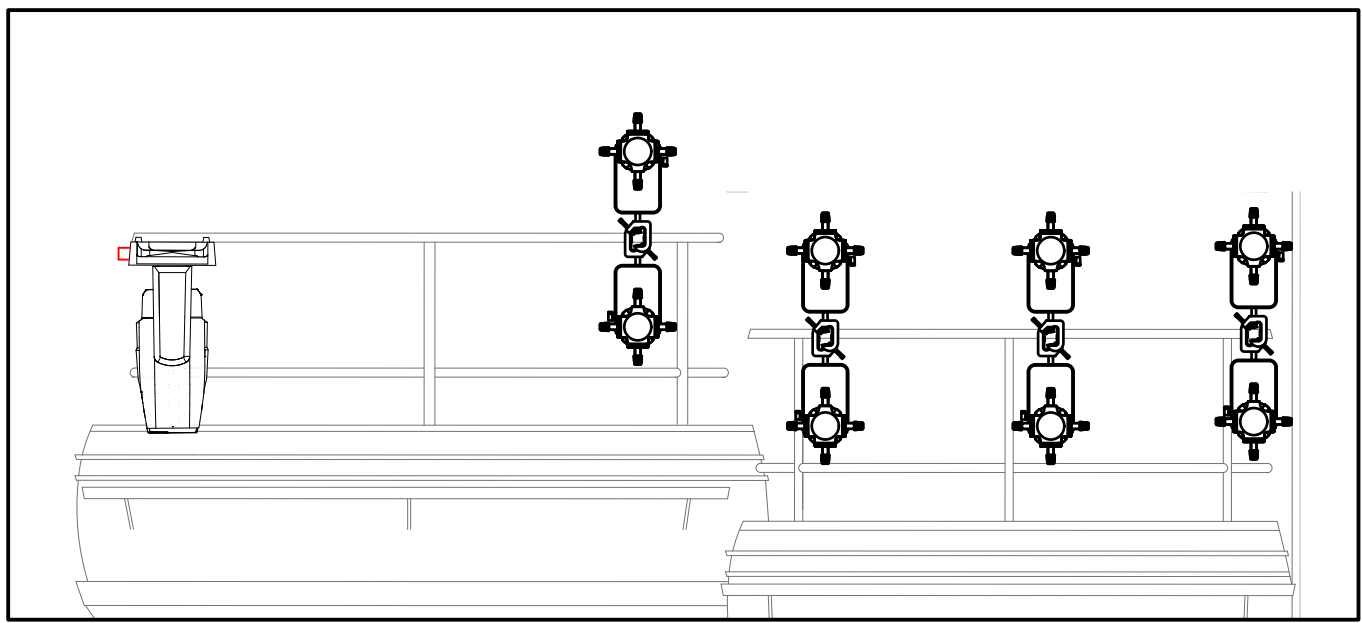
DIRECTED BY Amanda Consol
LIGHTING BY Lauren Gallup
PROJECTIONS BY N/A
SCENERY BY Grace Guarniere
SOUND BY N/A
ASST. LX DESIGNER Jacob Hughes
MASTER ELECTRICIAN Carrie Barton

Maryland Opera Studio
The Cunning Little Vixen
The Clarice Smith Performing Arts Center
Kay Theatre

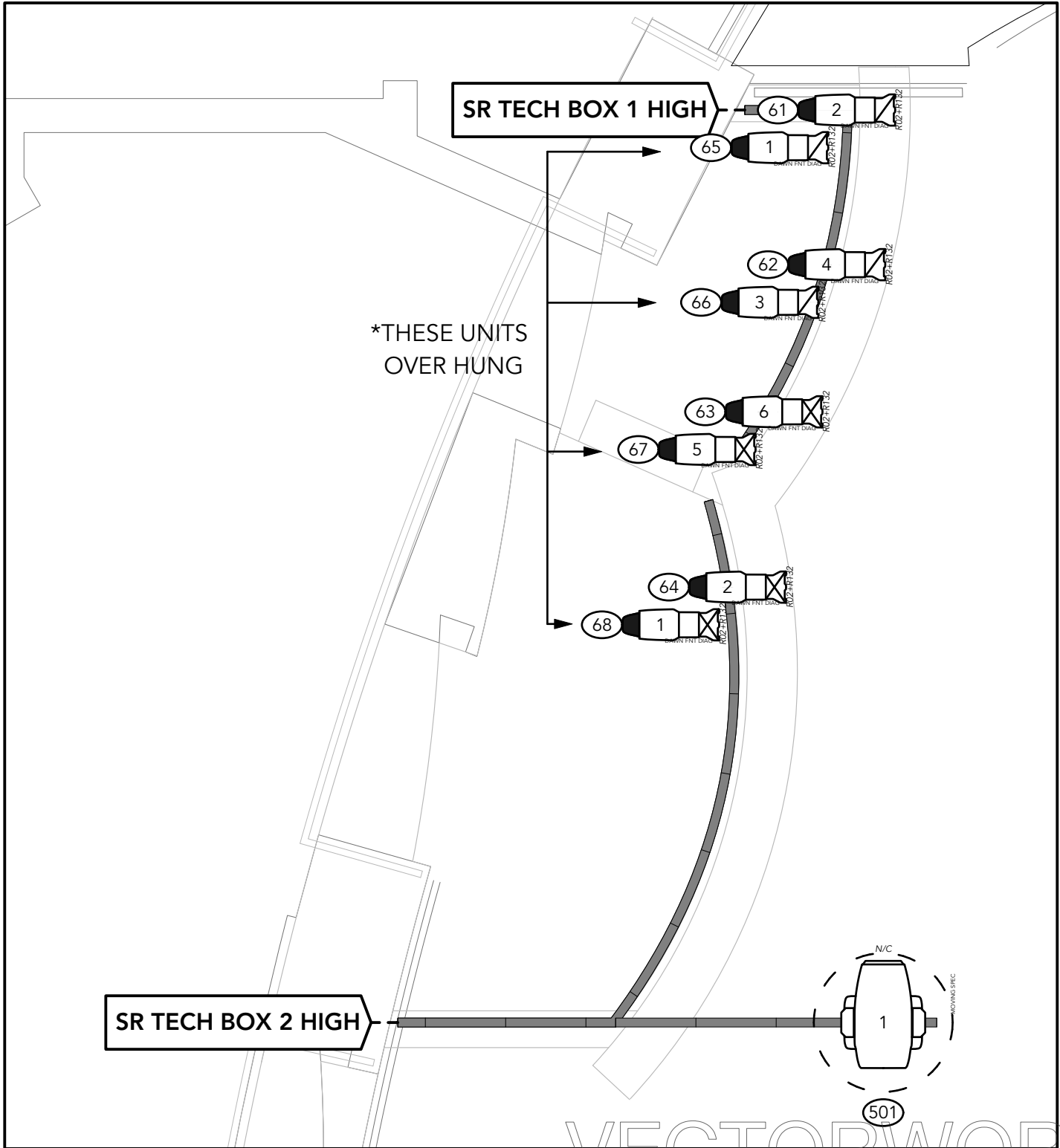


LAUREN GALLUP
LIGHTING DESIGN
www.laurengallup.com
lrgallup@gmail.com
281-450-7092

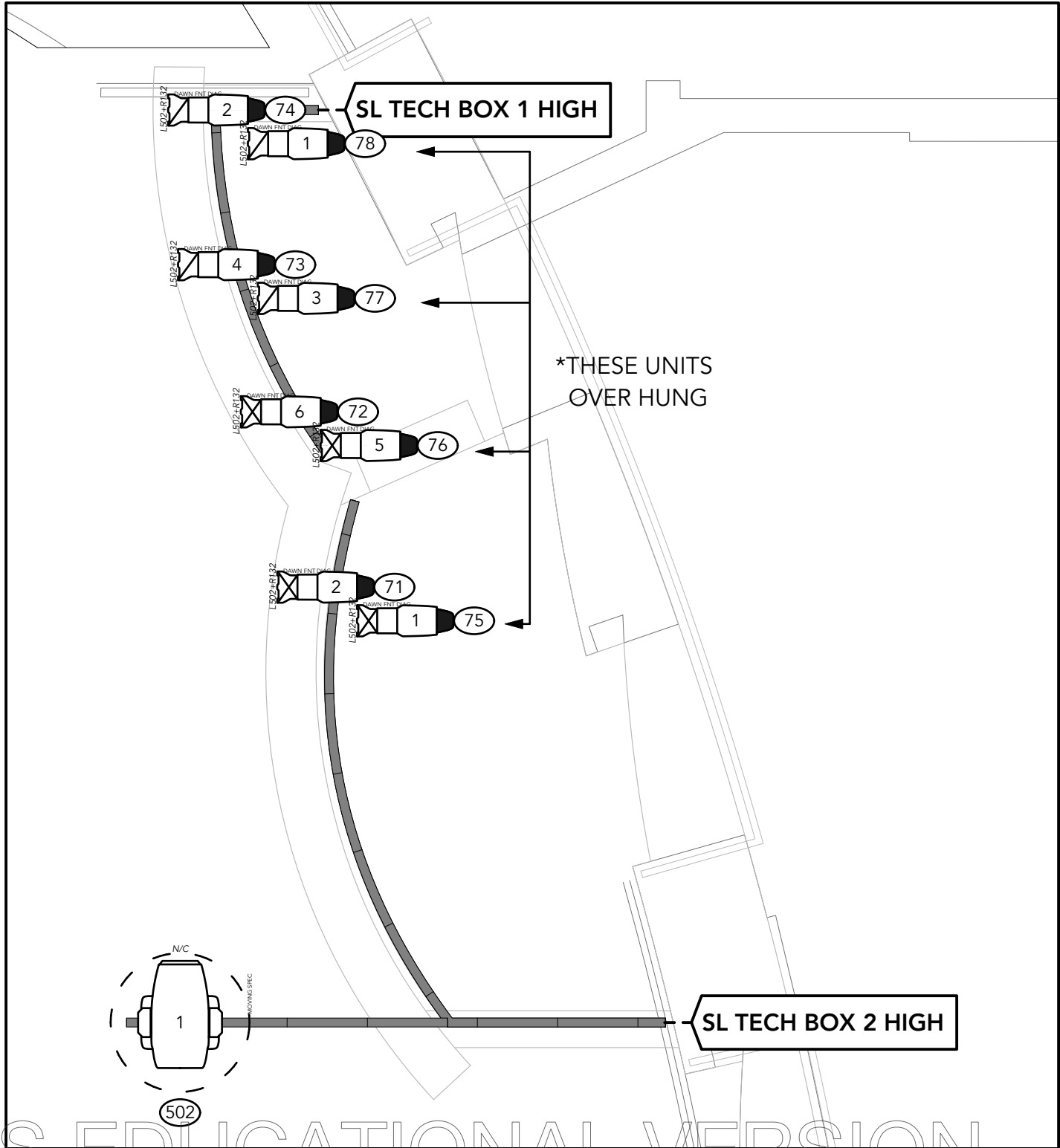
SR TECH BOX - SECTION VIEW



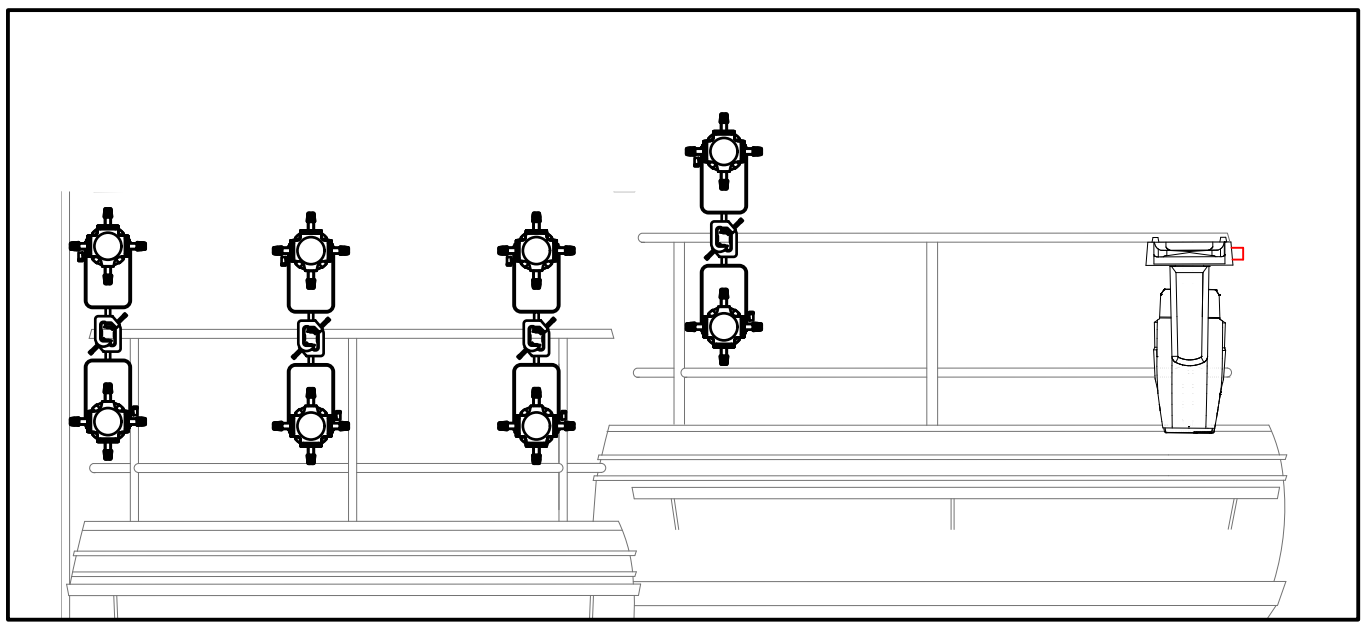
SR TECH BOX



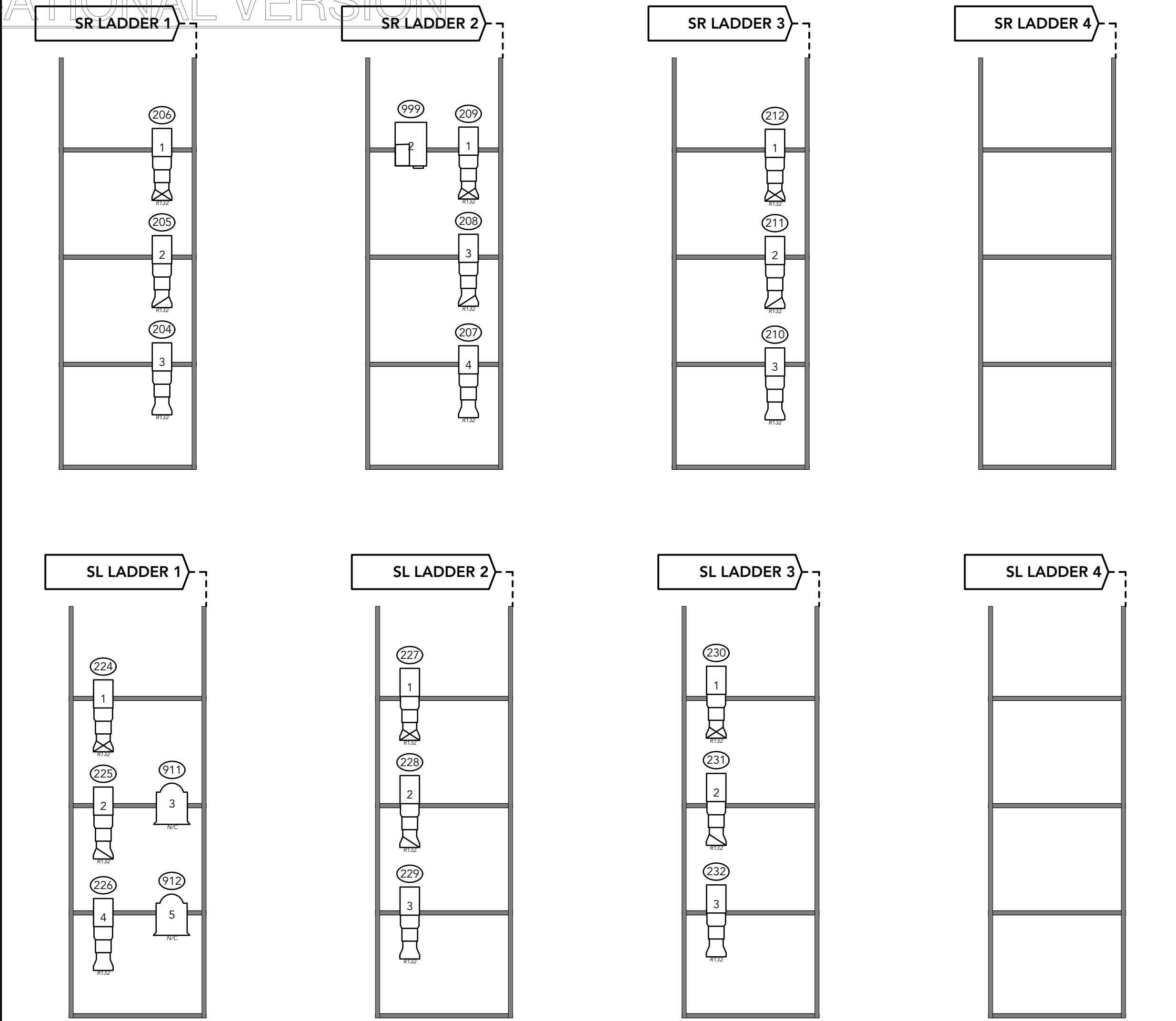
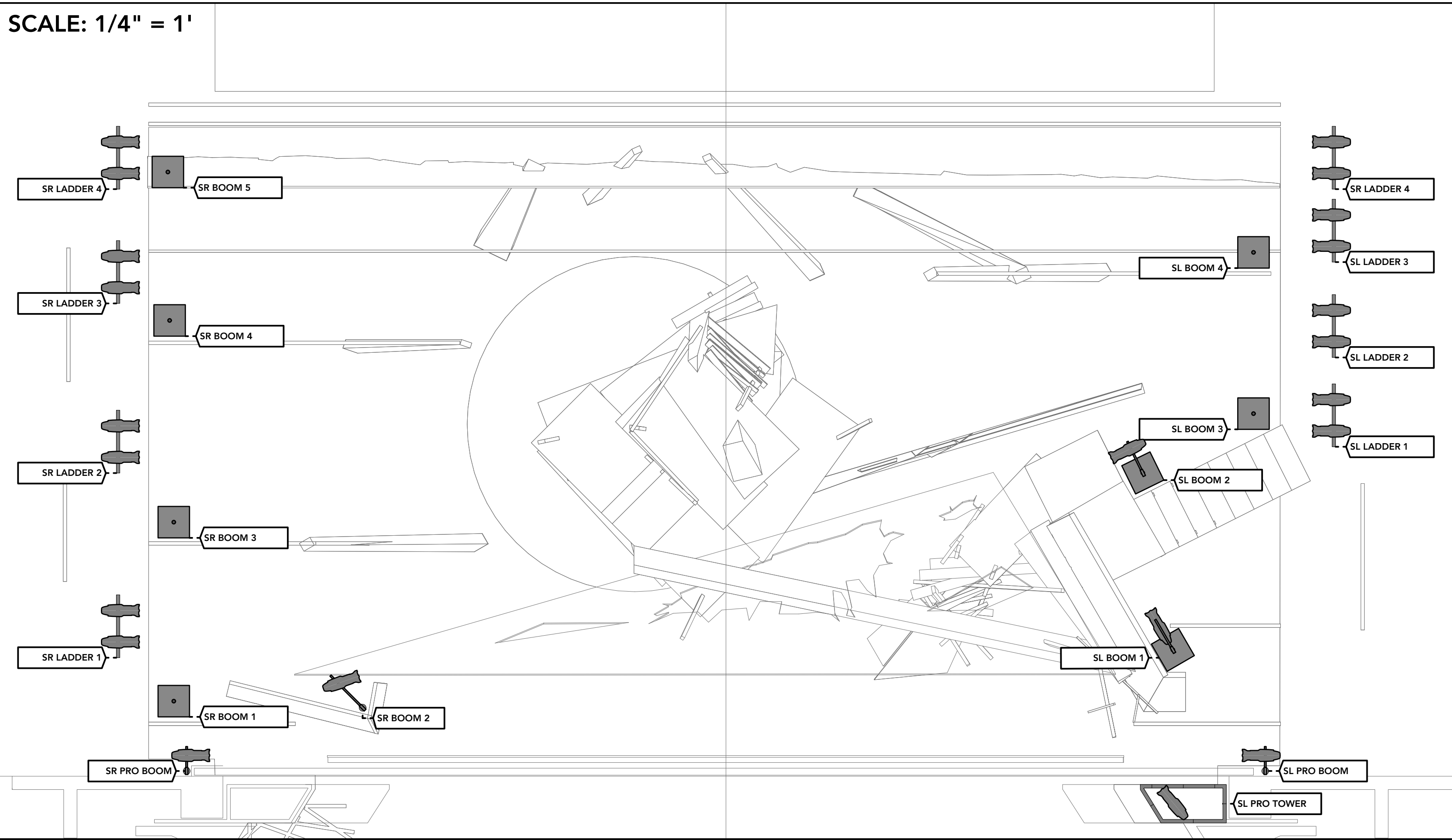
SL TECH BOX



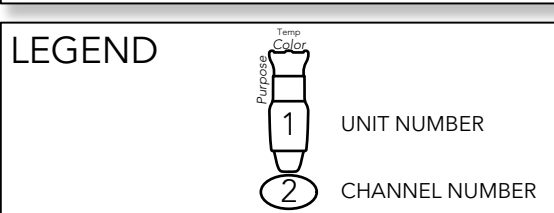
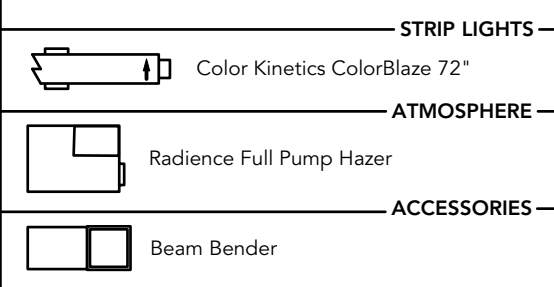
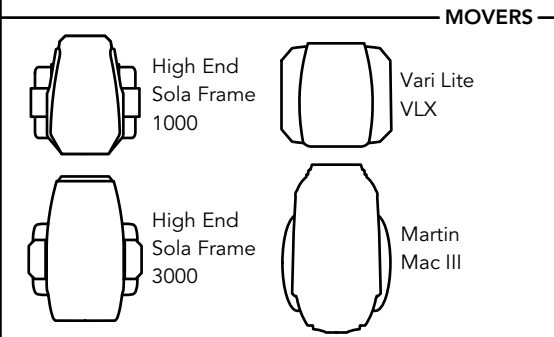
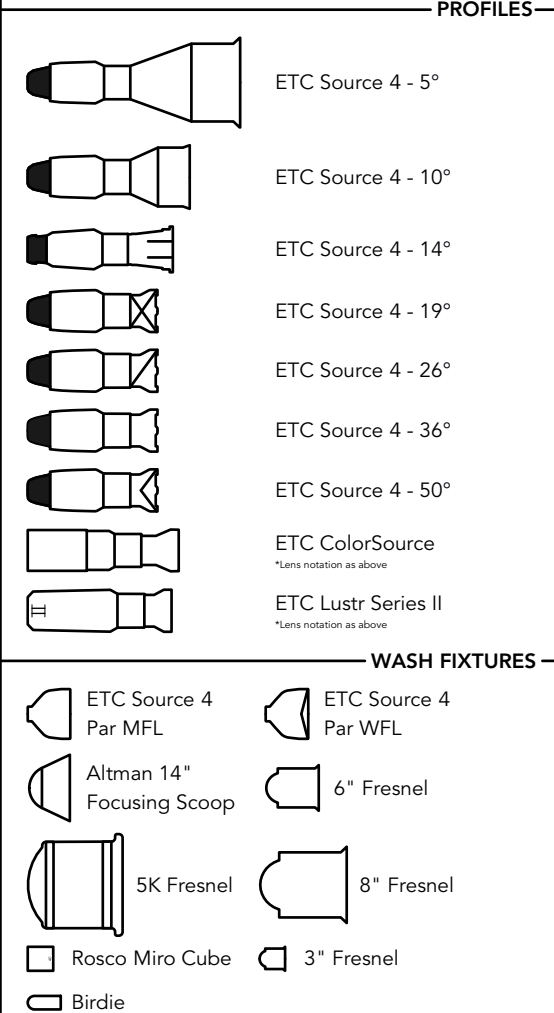
SL TECH BOX - SECTION VIEW



SCALE: 1/4" = 1'



KEY



NOTES

- Please have extra R119 and R132 on hand for focus
- Set mounts are very subject to change based on blocking and set dressing

VERSION	DATE	NOTE

THIS DRAWING REPRESENTS VISUAL CONCEPTS AND CONSTRUCTION SUGGESTIONS ONLY. IT DOES NOT REPLACE THE KNOWLEDGE AND ADVICE OF A LICENSED STRUCTURAL ENGINEER. THE DESIGNER IS UNQUALIFIED TO DETERMINE THE STRUCTURAL APPROPRIATENESS OF THIS DESIGN AND WILL NOT ASSUME RESPONSIBILITY FOR IMPROPER ENGINEERING OR USE.

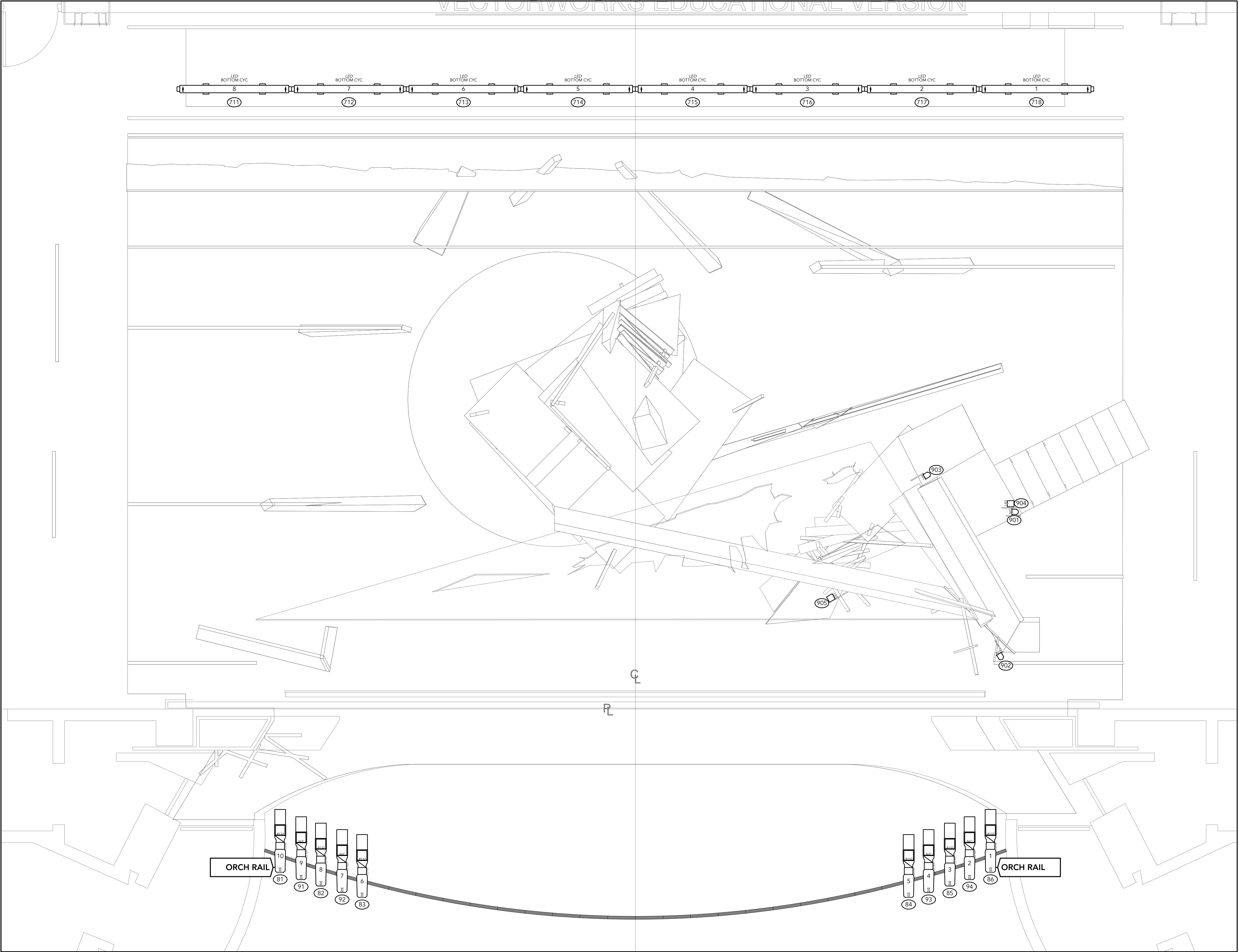
DIRECTED BY Amanda Consol
LIGHTING BY Lauren Gallup
PROJECTIONS BY N/A
SCENERY BY Grace Guarniere
SOUND BY N/A
ASST. LX DESIGNER Jacob Hughes
MASTER ELECTRICIAN Carrie Barton

Maryland Opera Studio
The Cunning Little Vixen
The Clarice Smith Performing Arts Center
Kay Theatre



LAUREN GALLUP
LIGHTING DESIGN
www.laurengallup.com
lga@lgaup@gmail.com
281-450-7092

DATE	VER.	SCALE	SHEET
3.6.20	3	1:1	4
LADDERS AND BOOMS			OF 6



*SET MOUNTS SUBJECT TO CHANGE
BASED ON BLOCKING

KEY

- PROFILES**
- ETC Source 4 - 5"
 - ETC Source 4 - 10"
 - ETC Source 4 - 14"
 - ETC Source 4 - 19"
 - ETC Source 4 - 26"
 - ETC Source 4 - 36"
 - ETC Source 4 - 50"
 - ETC ColorSource
 - ETC Lustr Series II

- WASH FIXTURES**
- ETC Source 4 Par MFL
 - Altman 14" Focusing Scoop
 - 5K Fresnel
 - Rosco Miro Cube
 - Birdie
 - ETC Source 4 Par WFL
 - 6" Fresnel
 - 8" Fresnel
 - 3" Fresnel

- MOVERS**
- High End Solo Frame 1000
 - High End Solo Frame 3000
 - Vari Lite VLX
 - Martin Mac III

- STRIP LIGHTS**
- Color Kinetics ColorBlaze 72"

- ATMOSPHERE**
- Radiance Full Pump Hazer

- ACCESSORIES**
- Beam Bender

- LEGEND**
- UNIT NUMBER
 - CHANNEL NUMBER

NOTES

- Please have extra R119 and R132 on hand for focus
- Set mounts are very subject to change based on blocking and set dressing

VERSION	DATE	NOTE

THIS DRAWING REPRESENTS VISUAL CONCEPTS AND CONSTRUCTION SUGGESTIONS ONLY. IT DOES NOT REPLACE THE KNOWLEDGE AND ADVICE OF A LICENSED STRUCTURAL ENGINEER. THE DESIGNER IS UNQUALIFIED TO DETERMINE THE STRUCTURAL APPROPRIATENESS OF THIS DESIGN AND WILL NOT ASSUME RESPONSIBILITY FOR IMPROPER ENGINEERING OR USE.

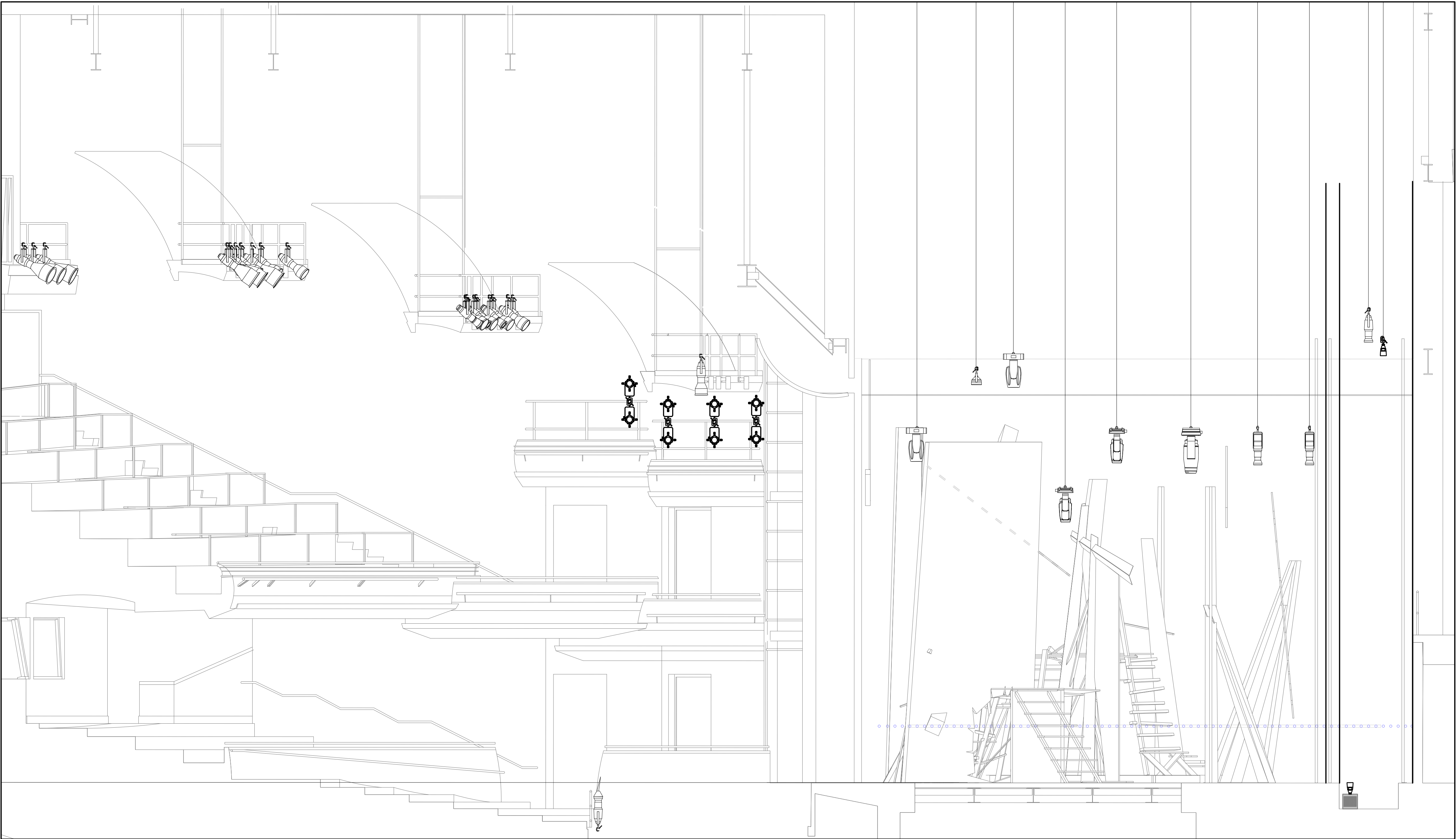
DIRECTED BY Amanda Consol
LIGHTING BY Lauren Gallup
PROJECTIONS BY N/A
SCENERY BY Grace Guarniere
SOUND BY N/A
ASST. LX DESIGNER Jacob Hughes
MASTER ELECTRICIAN Carrie Barton

Maryland Opera Studio
The Cunning Little Vixen
The Clarice Smith Performing Arts Center
Kay Theatre



LAUREN GALLUP
LIGHTING DESIGN
www.laurengallup.com
lga@lgaup@gmail.com
281-450-7092

DATE	VER.	SCALE	SHEET
3.6.20	3	3/8" = 1'	5
DECK			OF 6



KEY

ETC Source 4 - 5°

ETC Source 4 - 10°

ETC Source 4 - 14°

ETC Source 4 - 19°

ETC Source 4 - 26°

ETC Source 4 - 36°

ETC Source 4 - 50°

ETC ColorSource

ETC Lustr Series II

ETC Source 4 Par MFL

Altman 14" Focusing Scoop

5K Fresnel

Rosco Miro Cube

Birdie

ETC Source 4 Par WFL

6" Fresnel

8" Fresnel

3" Fresnel

High End Solo Frame 1000

High End Solo Frame 3000

Vari Lite VLX

Martin Mac III

Color Kinetics ColorBlaze 72"

Radiance Full Pump Hazer

Beam Bender

LEGEND

1

UNIT NUMBER

2

CHANNEL NUMBER

NOTES

-Please have extra R119 and R132 on hand for focus

-Set mounts are very subject to change based on blocking and set dressing

VERSION	DATE	NOTE

THIS DRAWING REPRESENTS VISUAL CONCEPTS AND CONSTRUCTION SUGGESTIONS ONLY. IT DOES NOT REPLACE THE KNOWLEDGE AND ADVICE OF A LICENSED STRUCTURAL ENGINEER. THE DESIGNER IS UNQUALIFIED TO DETERMINE THE STRUCTURAL APPROPRIATENESS OF THIS DESIGN AND WILL NOT ASSUME RESPONSIBILITY FOR IMPROPER ENGINEERING OR USE.

DIRECTED BY Amanda Consol

LIGHTING BY Lauren Gallup

PROJECTIONS BY N/A

SCENERY BY Grace Guarniere

SOUND BY N/A

ASST. LX DESIGNER Jacob Hughes

MASTER ELECTRICIAN Carrie Barton

Maryland Opera Studio

The Cunning Little Vixen

The Clarice Smith Performing Arts Center

Kay Theatre



THE CUNNING LITTLE VIXEN

LAUREN GALLUP

LIGHTING DESIGN

www.laurengallup.com

lrgallup@gmail.com

281-450-7092

DATE	VER.	SCALE	SHEET
3.6.20	3	1/4" = 1'	6
SECTION			OF 6